



MVPS Maths Problem Solving Challenge

TERM 3 – WEEK 10 ~SOLUTIONS~

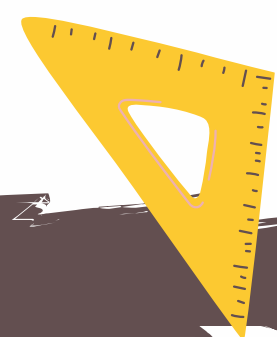
Congratulations to the following students on successfully solving their maths problem:

Grace C - KM

Emma D - 5BC

Courtney H - 2H

Zoe J - 5BC



The Maths Committee Team

★ Birds' Eggs

There are 10 possibilities:

1, 1, 17	1, 7, 11	3, 3, 13	5, 5, 9
1, 3, 15	1, 9, 9,	3, 5, 11	5, 7, 7
1, 5, 12		3, 7, 9	

★★ Duck ponds

1. (2) (2) (5) (5)
2. (2) (4) (8)
3. (5) (4) (3) (2)

★★★ Maze

There are two routes that total 100 exactly:

$$+ 6 \quad \times 7 \quad - 6 \quad \times 3 \quad - 8 \quad = 100$$

$$+ 9 \quad \times 7 \quad \div 3 \quad \times 5 \quad - 5 \quad = 100$$

The route giving the highest total is:

$$+ 9 \quad \times 7 \quad - 6 \quad \times 7 \quad - 8 \quad = 391$$

The route giving the lowest total is:

$$+ 6 \quad \times 7 \quad \div 3 \quad \times 3 \quad - 8 \quad = 34$$

Credit:

We'd like to attribute this week's maths Problem Solving tasks to National Numeracy Strategy UK.